





İLİM MOULD COMPANY started to production operations at small industrial area in 2007. Afterwards, our company moved to the new factory in 2018. The new factory was established to 2500 m2 individual area at Muradiye Medium-Sized Industrial Estate. We have been proceeding to production the new factory since 2018.

In line with our company purpose, ISO 9001 CERTIFICATE was obtained succesfully in April 2019.



Sertifika

Certificate



İLİM KALIP İMALAT SAN. VE TİC.LTD.ŞTİ.

EVRENOS MAH. EVRENOS KÜME EVLERİ NO:14/A YUNUSEMRE – MANİSA

kuruluşu KAS Sertifikasyon tarafından değerlendirilmiş ve
has been assessed by KAS Certification and confirmed to comply with the requirements of

ISO 9001:2015

Kalite Yönetim Sistemi

Quality Management System

standardının gerekliliklerini aşağıdaki faaliyet kapsamında karşıladığı tespit edilmiştir:
standard for following scope:

Sac metal kalıpları imali ve revizyonu, metal geri dönüşüm bıçakları, makine ve kalıp yedek
parçaları, metal aparat üretimi

Production and revision of Sheet metal molds, production of metal recycling blades, machine and mold
spare parts, metal apparatus

Sertifika yayın tarihi: 18/10/2019
Date of issue:

Sertifika geçerlilik tarihi: 17/10/2020
Date of validity:

Sertifika no: KAS181020191353
Certificate no:

Sertifika geçerlilik süresi her yıl yapılan gözetim tetkiki sonucu başarılı ise 1 yıl uzatılır.
If annual surveillance audit result is successful, certificate validity is extended for 1 year.

Onay
Authorized

Genel Müdür
Executive Manager
11/11/2019



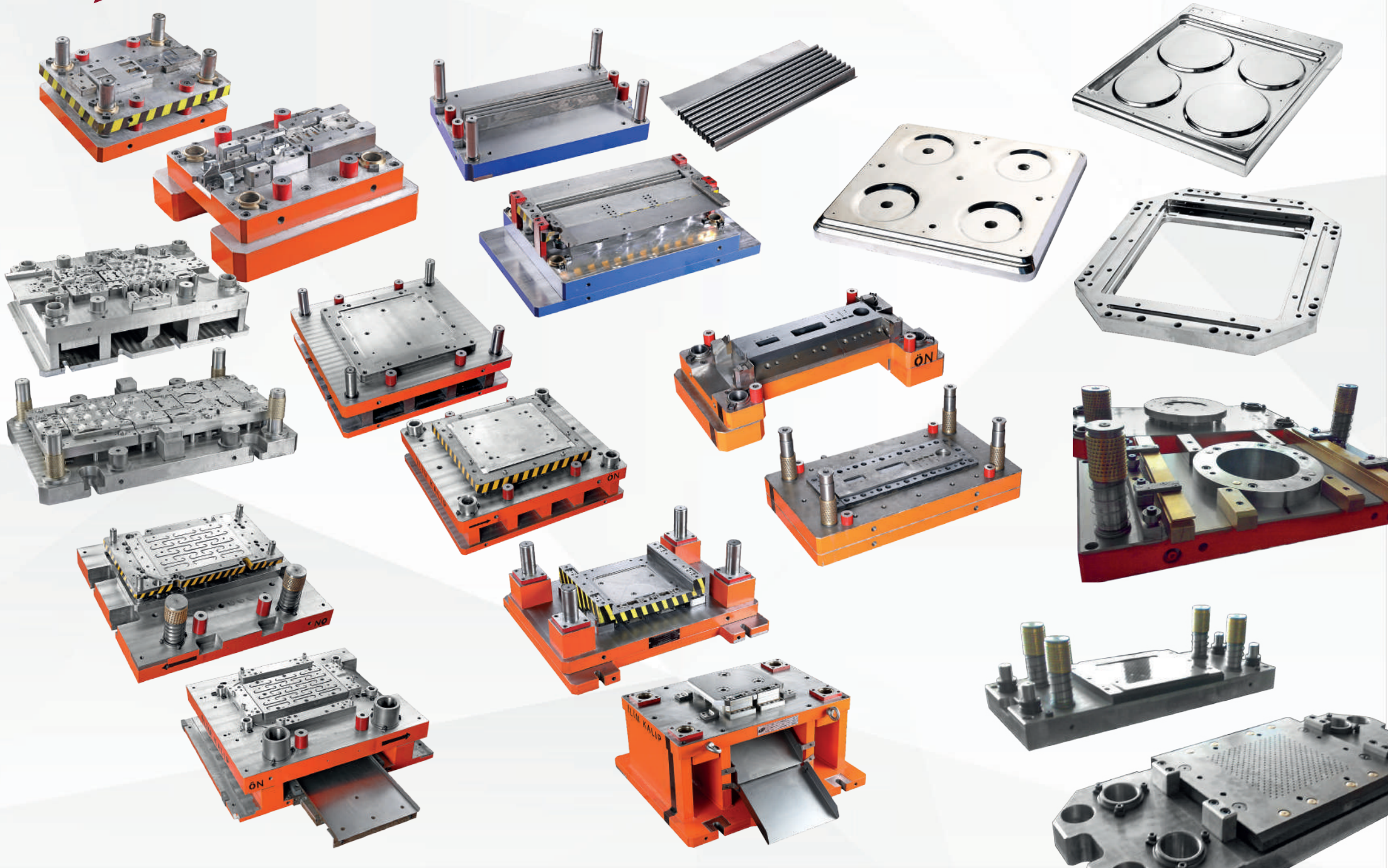
Belgelendirmenin yenilenebilmesi için 3 yıllık sertifika çevriminin dolduğu tarih olan 17/10/2022 tarihinden
önce müşteri 'yeniden belgelendirme' tetkikini başarılı olarak tamamlamış olmalıdır.
In order to renew the certification, recertification audit shall be successfully completed by 17/10/2022, before 3 years of
certification cycle is expired.

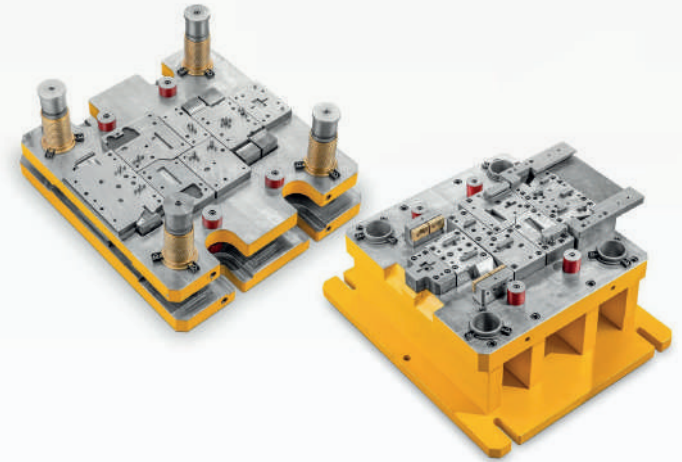
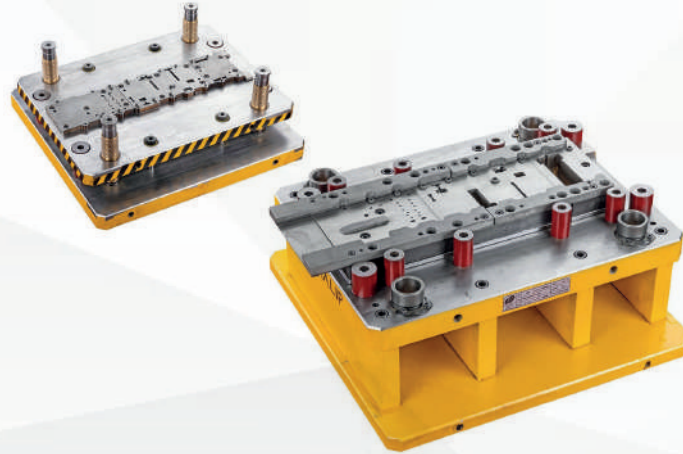
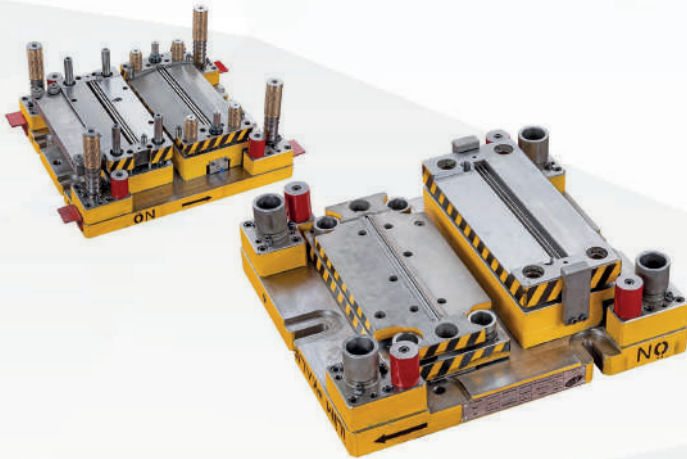
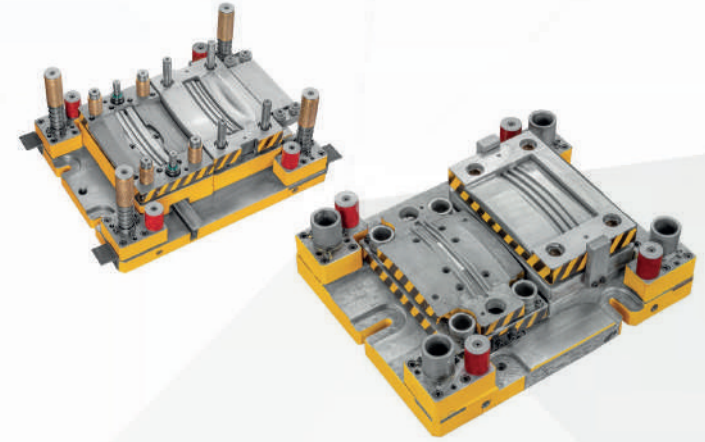
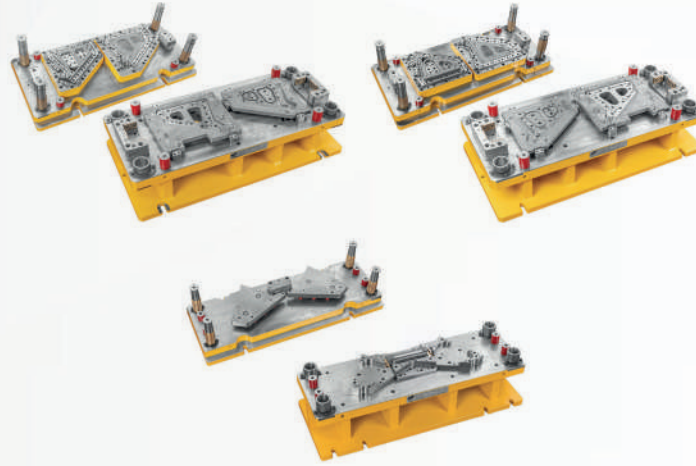
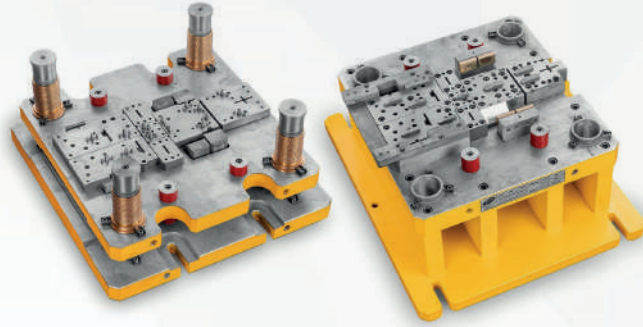
KAS Uluslararası Sertifikasyon Göz. Tek. Kont. Hiz. Ltd. Şti.
Kurtuluş Cad. No: 27 K: 3 Bornova İzmir-Türkiye

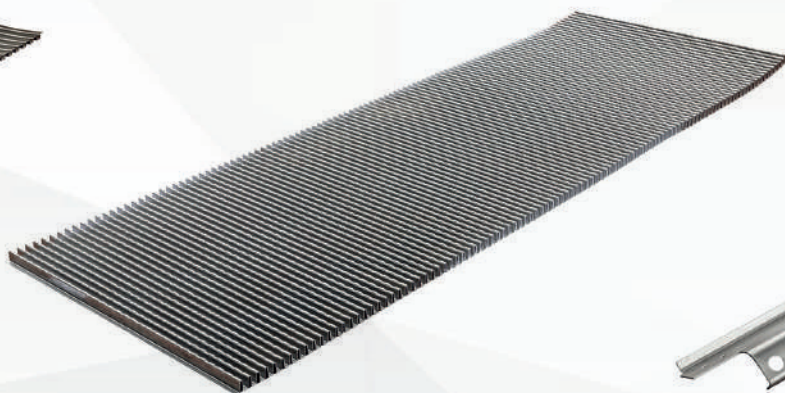
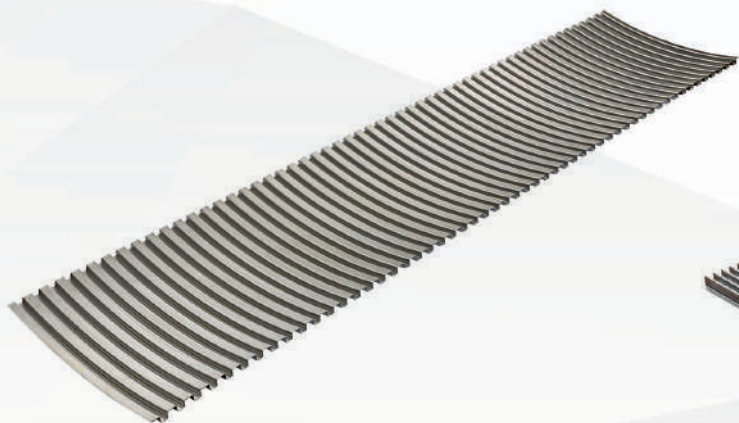
info@kascert.com www.kascert.com



Mould and sheet metal parts are produced to our company for sector-specific to white good, automotive, heating and cooling system, electric and electronic, metal recycling system and cage system.



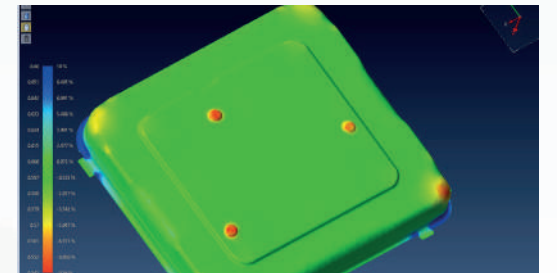
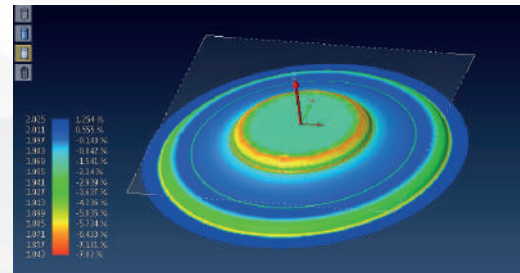
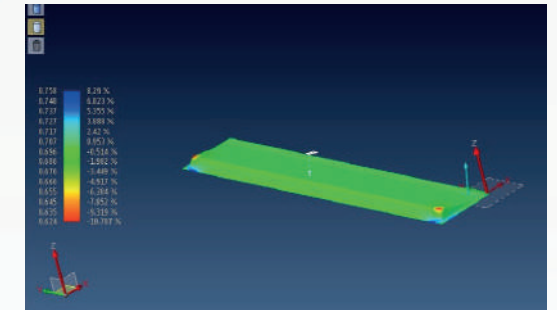
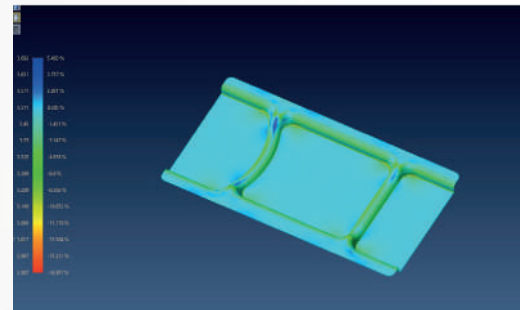
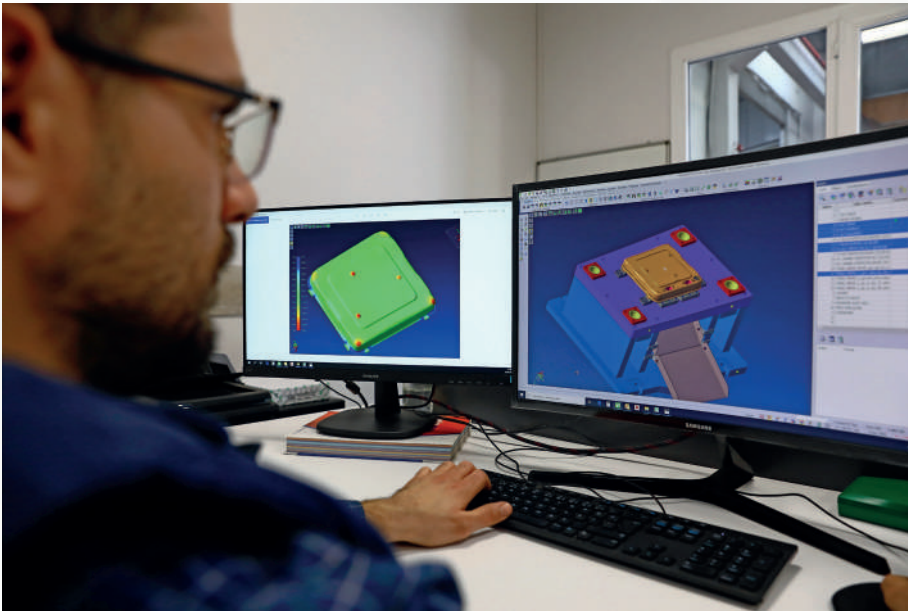






Design

Visi CAD and Analysis Programme was included to our company programmes, which can be performed measurement to analyses of mould and sheet metal design, tensile rupture test, and tonnage.





SOFTWARE USED IN OUR COMPANY

Software	Piece
Solid Works	1 piece
Autocad	3 piece
Esprit CAM	1 piece
VISI Cad&Analiz Program	1 piece





CNC

15.000 Hours / Year Capacity





CNC Machines

Machine Type	Mark	Performance Measure
Köprülü CNC Freze	Hartford	3000 x 2300 x 780
Köprülü CNC Freze	Hartford	3250 x 1500 x 750
Köprülü CNC Freze	Hartford	3250 x 1500 x 750
CNC Freze	Hartford	1100 x 560 x 500
CNC Freze	Hartford	1100 x 560 x 500
CNC Freze	Kafo	1100 x 600 x 500

Manual Machines

Satış Taşlama	SUPERTECH STP1834 ADS	800 x 400
Universal Freze	BORA	1200 x 300
Sutunlu Matkap	Sevindik	400 x 400



Wire EDM

10.000 Hours/Year Capacity





Wire EDM Machines

Machine Type	Mark	Performance Measure	Year
Tel Erezyon	SPM EZ40S	800 X 500 X 320	2011
Tel Erezyon	SPM EZ30S	600 X 400 X 300	2013
Tel Erezyon	Mitsubishi MW1200S	600 X 400 x 300	2021



PRODUCTION OF SHEET METAL PARTS

2.500 Hours/Year Capacity





Machine Name	Tonnage	Machine Type	Table Dimensions	Slide Width	Slide Tonnage	Model Year
Yadon	400	H Type Eccentric Press	3100x1500x550	800mm	3 Ton	2019
Yadon	250	H Type Eccentric Press	1300x900x500	600mm	3 Ton	2021
Yadon	200	H Type Eccentric Press	1200x800x500	600mm	3 Ton	2021
Aomate	200	H Type Eccentric Press	1200x800x500	600mm	3 Ton	2024
Aomate	200	H Type Eccentric Press	1200x800x500	600mm	3 Ton	2024
Aomate	260	H Type Eccentric Press	850x1250x500	600mm	3 Ton	2024



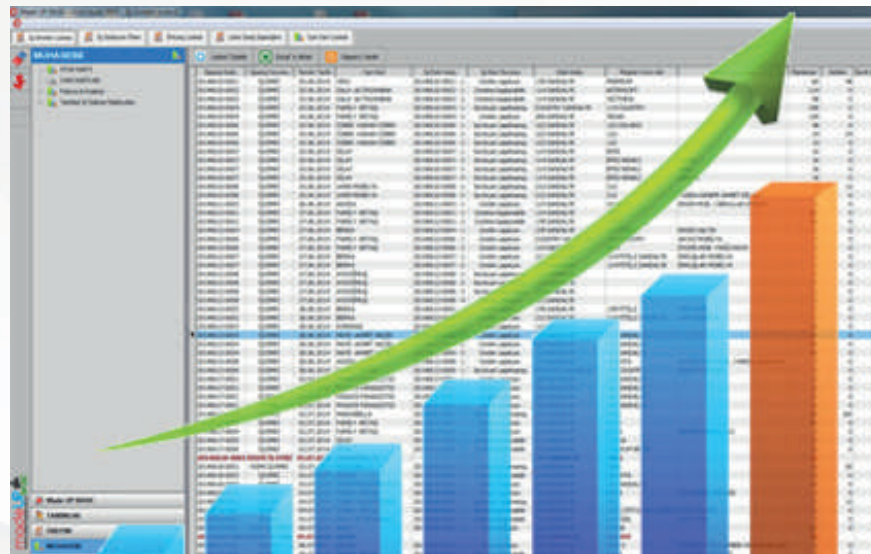
QUALITY CONTROL

Mould parts are measured with Haimer Probes to provide high quality control



PROJECTS/PRODUCTION REPORTS

Moulds are designated to the specific codes to provide controlled processes, which serve rapid production for new orders or probable mould modifications.



Company personnel, who knows english, so you can make contact with us.

Production datas are reported and production results are shared via e-mail.



Evranos Mah. Evrenos Küme Evleri No : 14/A Yunusemre/MANİSA

info@ilimkalip.com.tr - www. ilimkalip.com.tr

0236 233 11 16 - 0530 391 86 87 - 0530 391 86 90